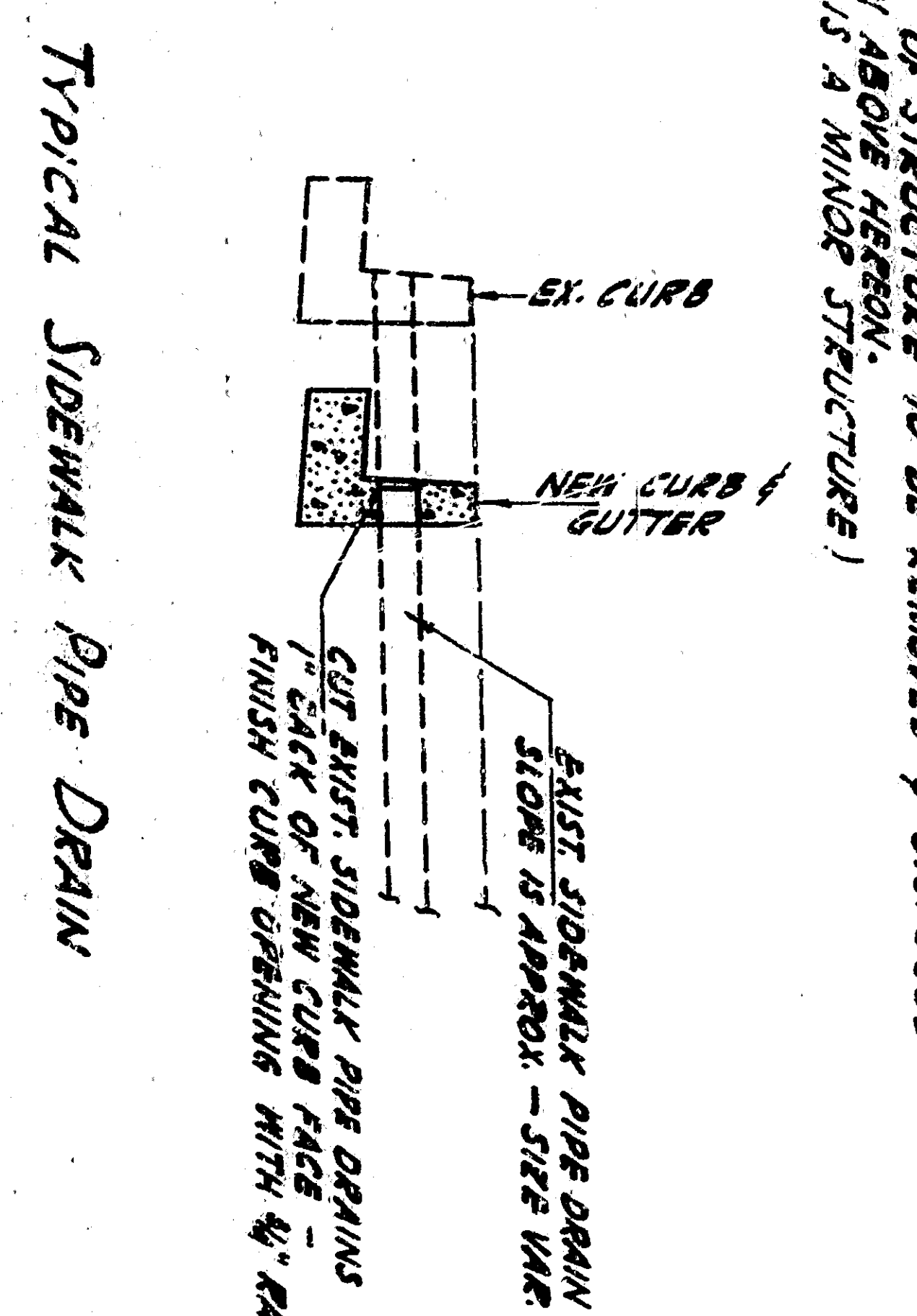


- GENERAL NOTES**
1. ALL REPAIR AND CHANGE CONCRETE SHALL BE CLASS 'X'.
 2. CONSTRUCTION OF NEW GUTTER DRAIN SHALL CONFORM TO EXISTING CURB AND TO THICKNESS OF WALLS, BOTTOM OF TIE AND THE AMOUNT SIZE & PLACING OF REINFORCING STEEL.
 3. REINFORCING STEEL IN EXISTING GUTTER DRAIN TO LEAD INTO NEW CONSTRUCTION 30 DIAMETERS.
 4. REMOVE EXISTING 30-0 GUTTER DRAIN 1\"/>



LOCATION	H	REAR	H
BLIND THE GUTTER	3'-0"	3'-0"	1'-2"
INSTALL THE GUTTER	3'-0"	3'-0"	1'-2"
REMOVE THE GUTTER	3'-0"	3'-0"	1'-2"
INSTALL THE GUTTER	3'-0"	3'-0"	1'-2"
REMOVE THE GUTTER	3'-0"	3'-0"	1'-2"
INSTALL THE GUTTER	3'-0"	3'-0"	1'-2"
REMOVE THE GUTTER	3'-0"	3'-0"	1'-2"
INSTALL THE GUTTER	3'-0"	3'-0"	1'-2"

REDEVELOPMENT AGENCY OF THE CITY OF SAN BERNARDINO

MEADOWBROOK PROJECT AREA NO. 1 CALIF. AND

DEPARTMENT OF ENGINEERING CITY OF SAN BERNARDINO

"E" STREET MISCELLANEOUS DETAILS

ACCEPTED BY: *R.C. Hall*

STAFF ENGINEER

DESIGNED BY: *R.C. Hall*

DRAWN BY: *R.C. Hall*

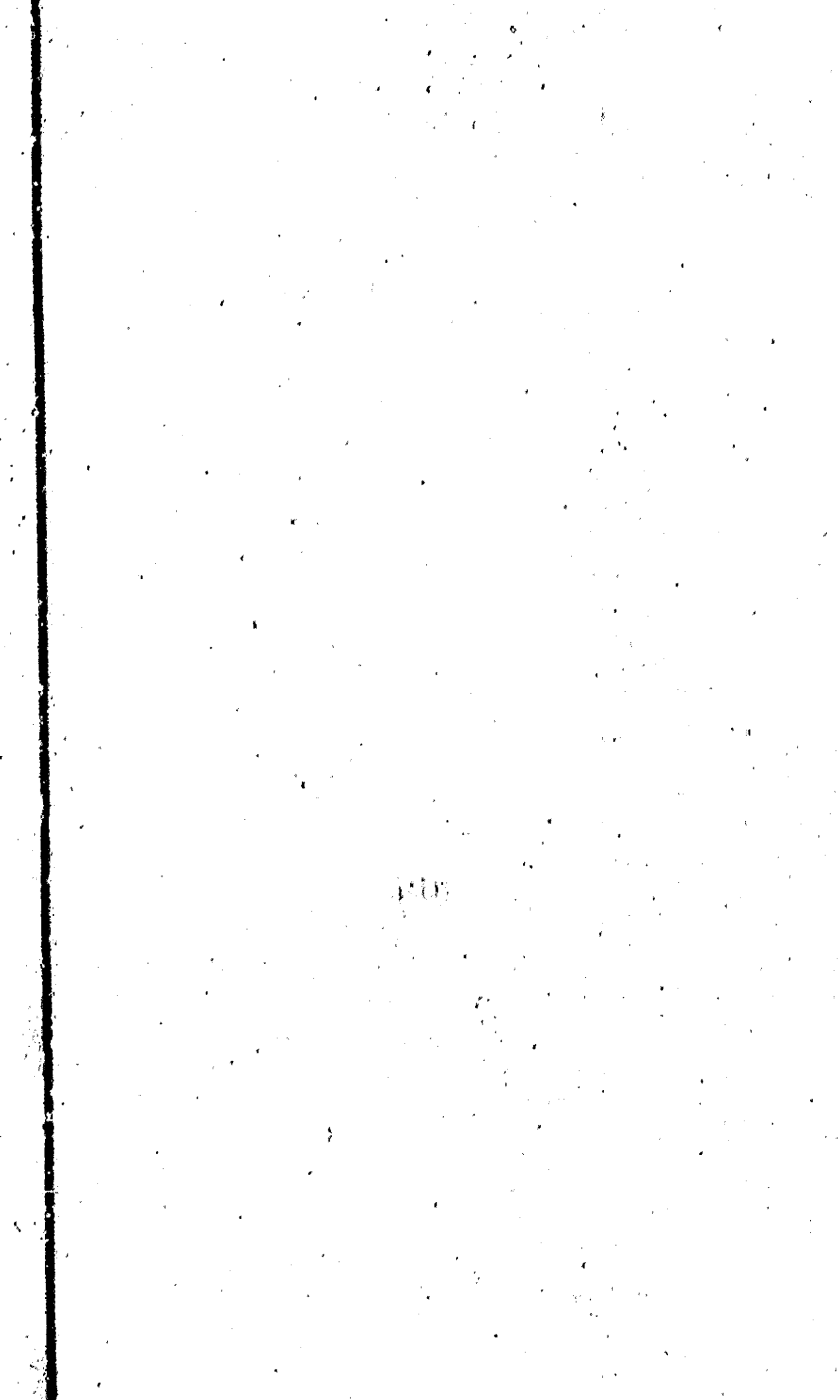
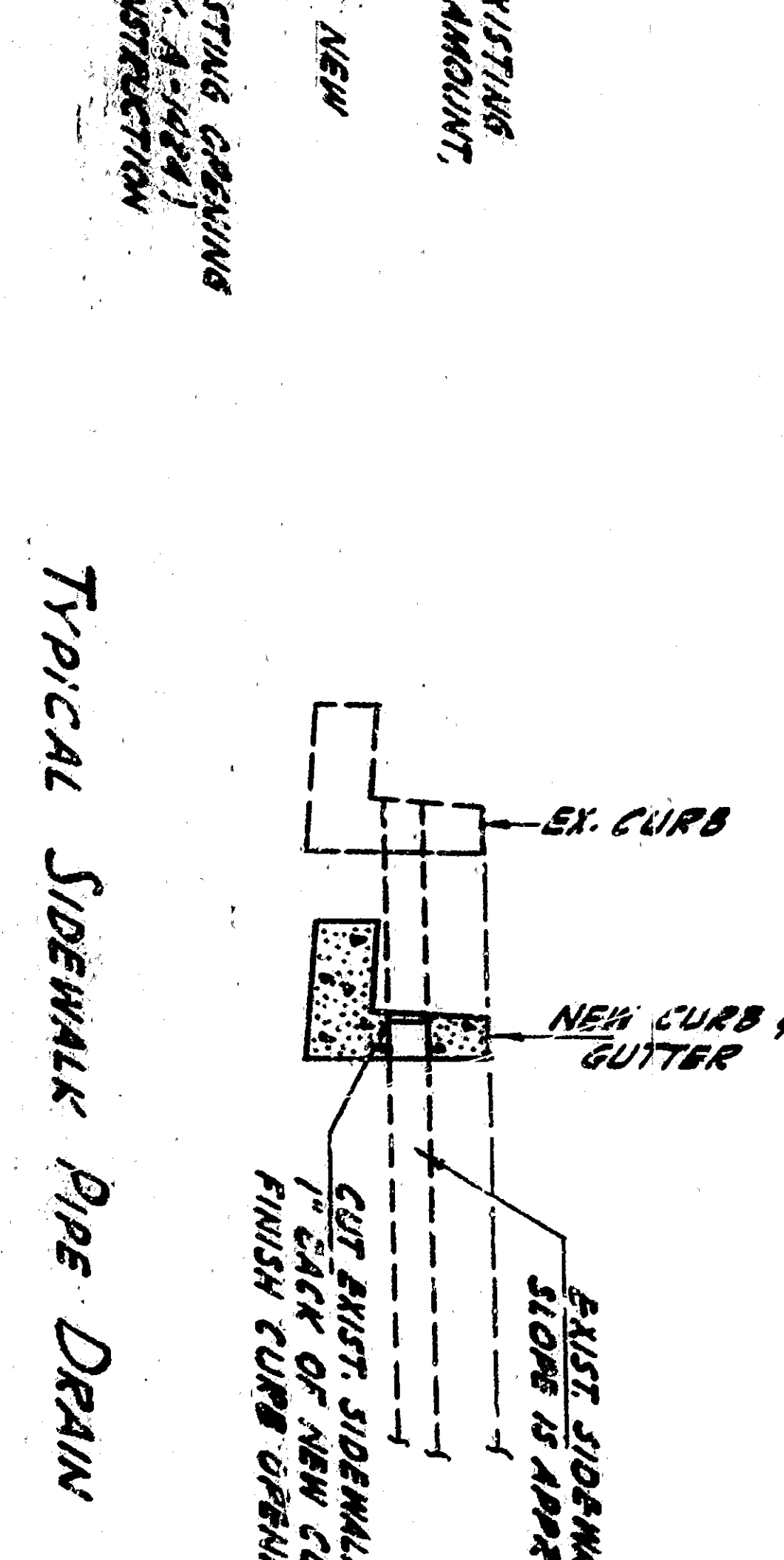
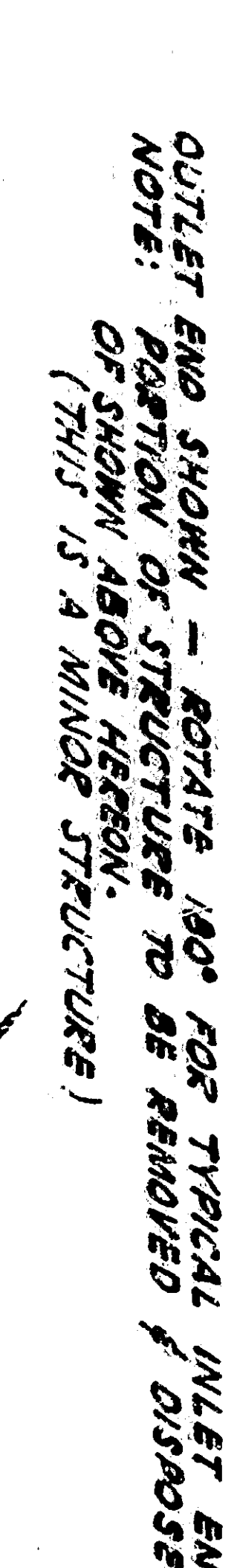
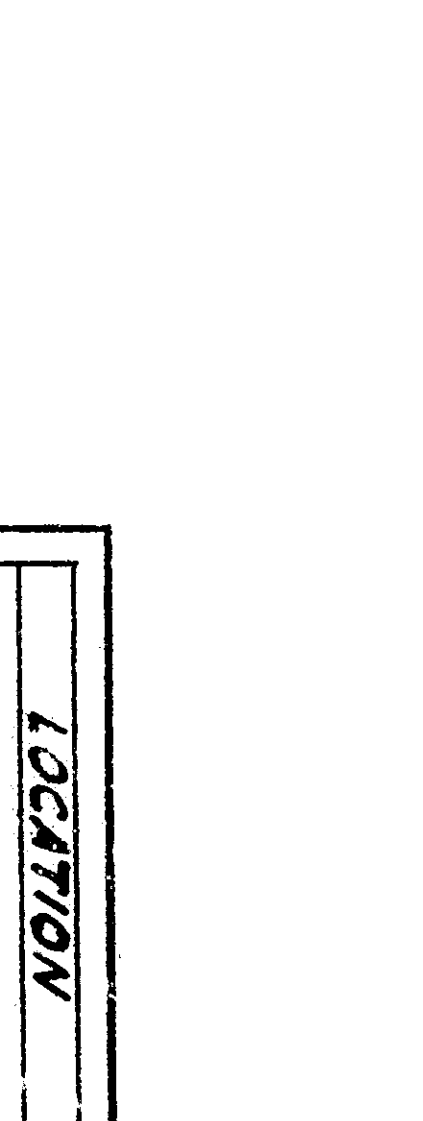
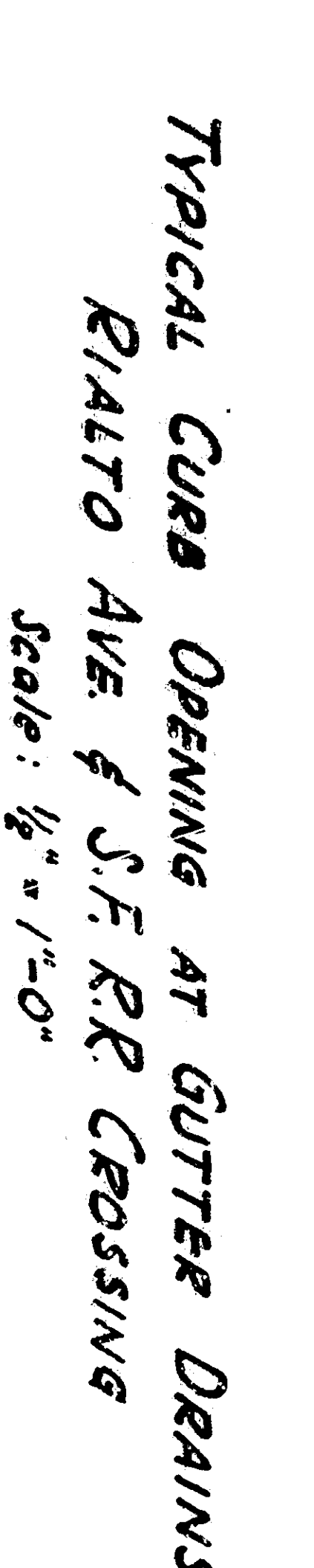
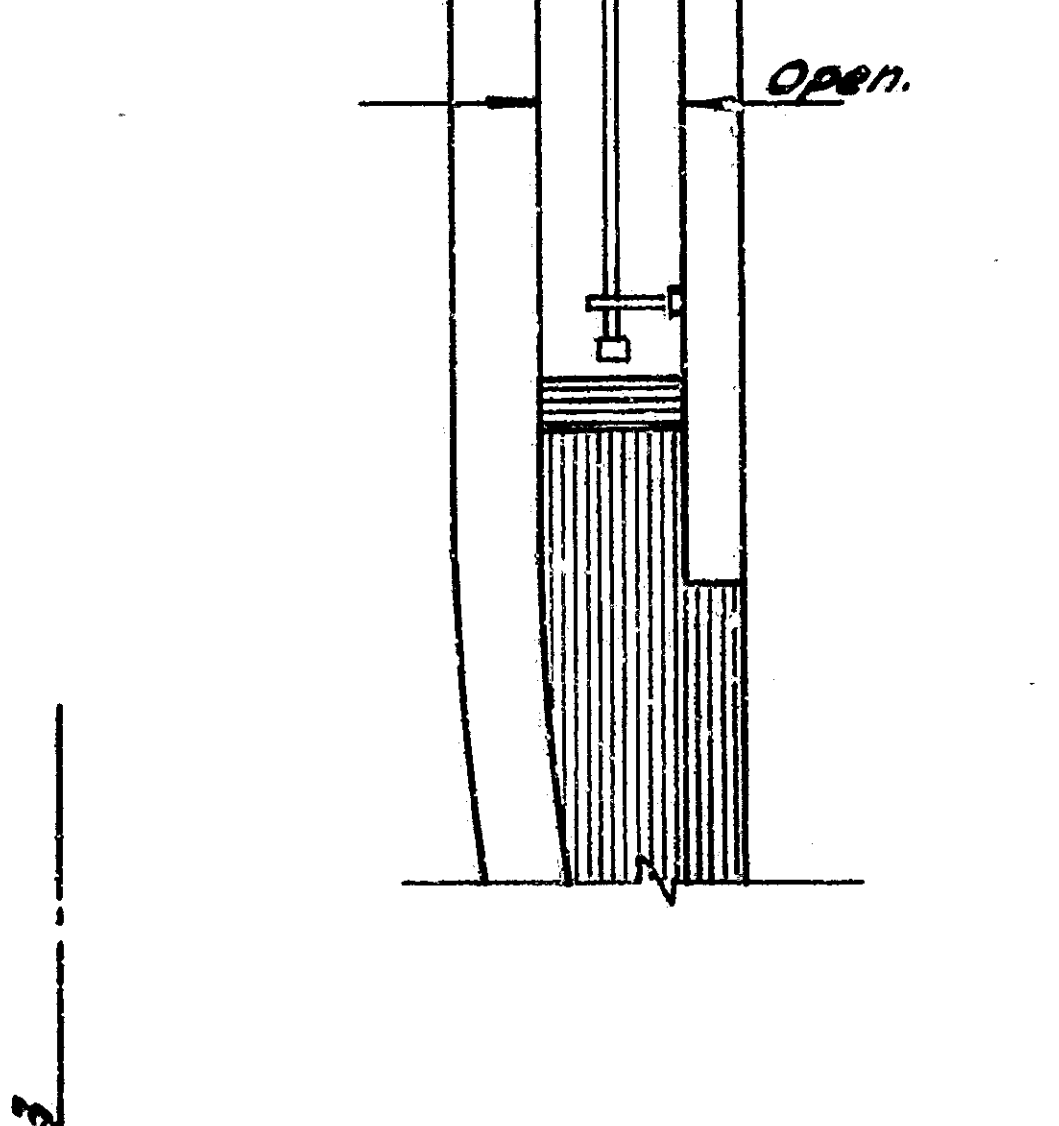
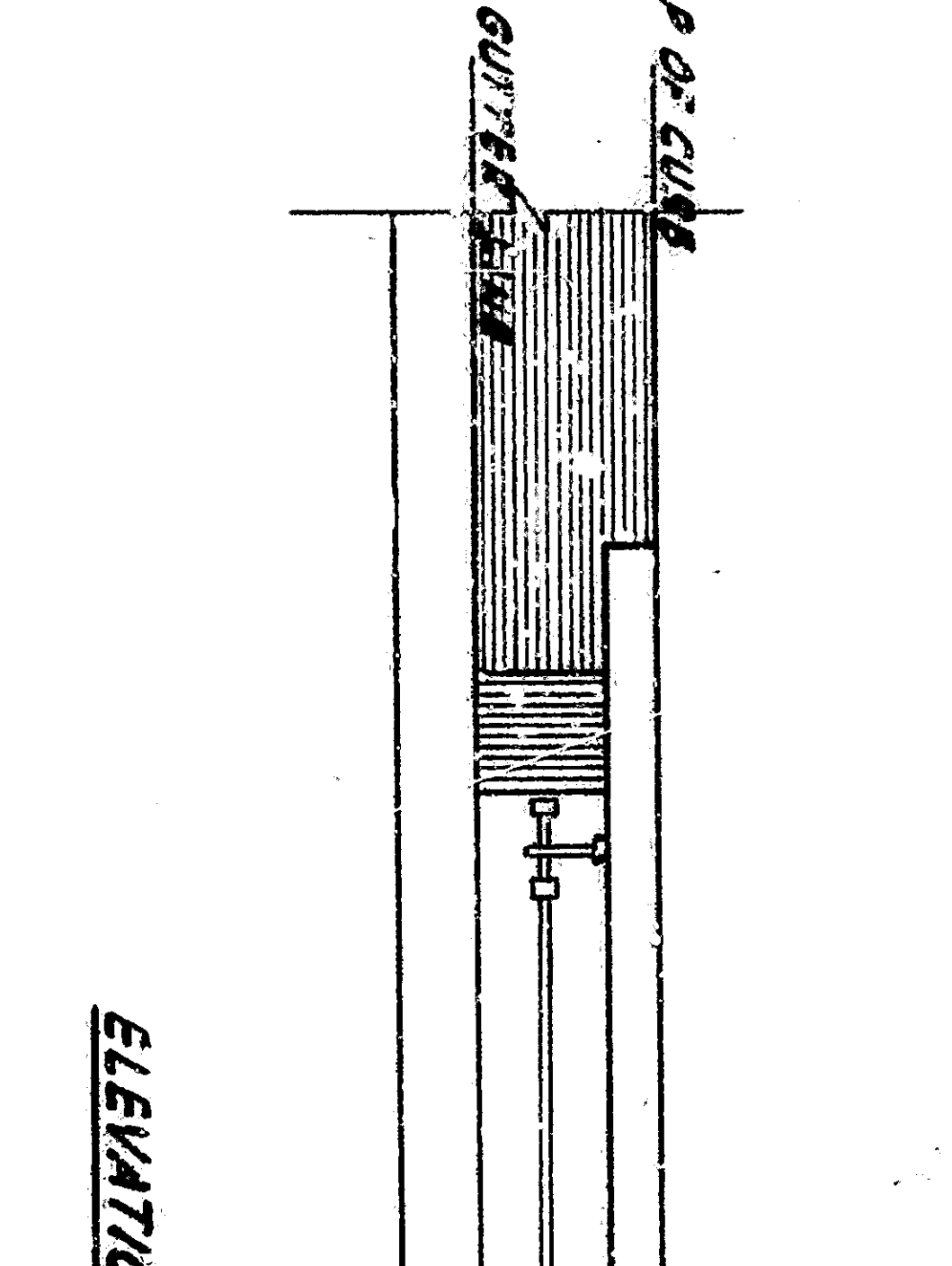
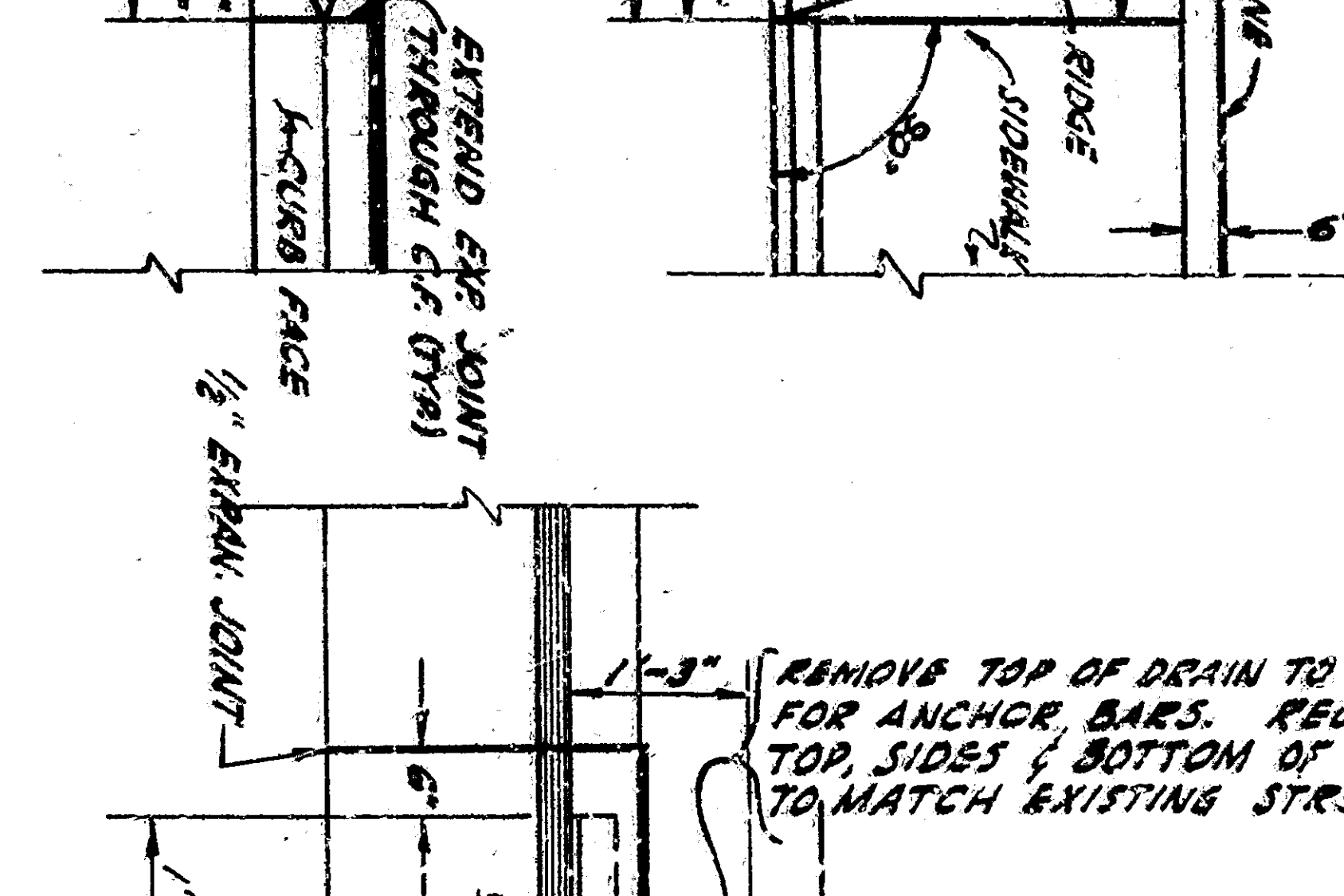
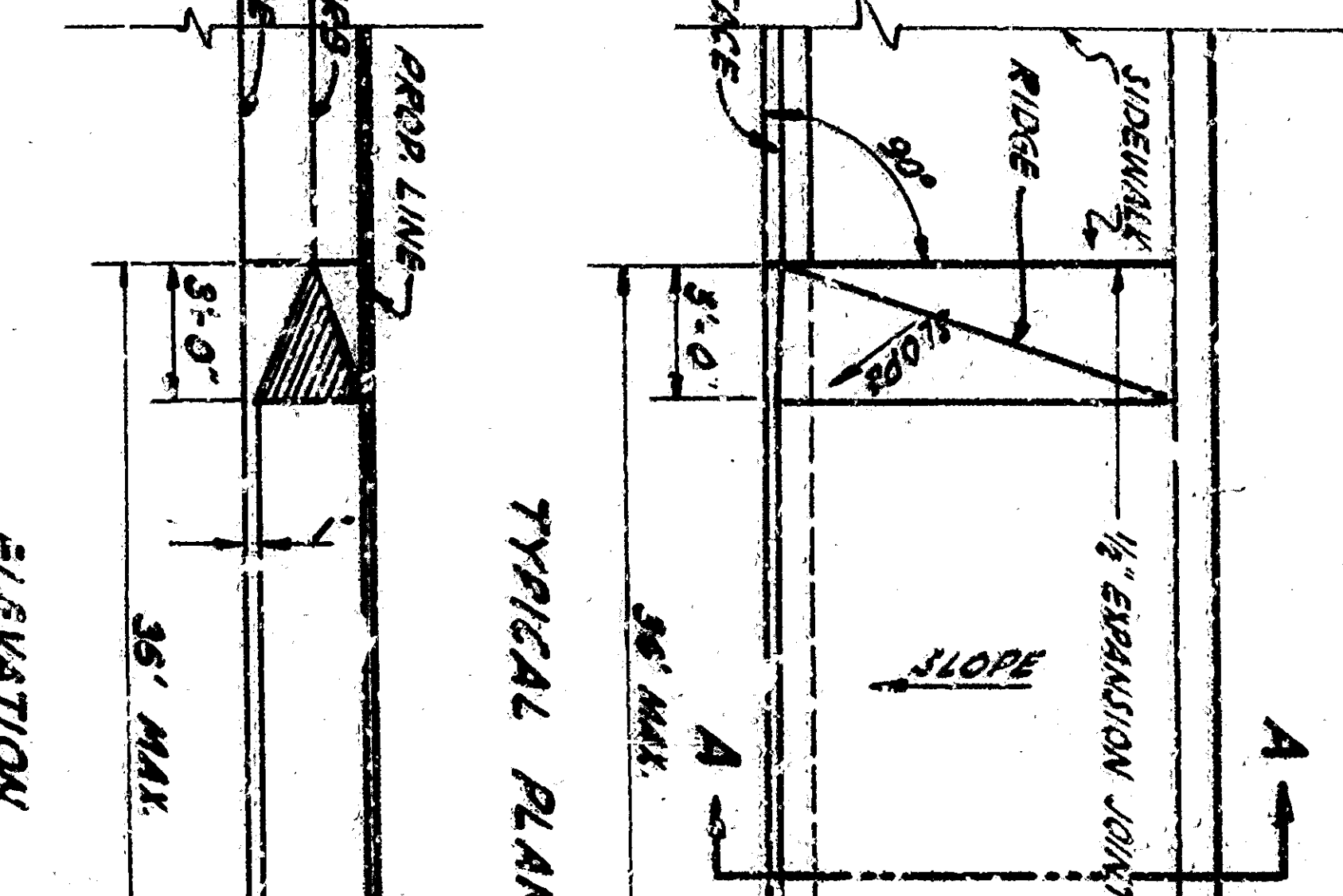
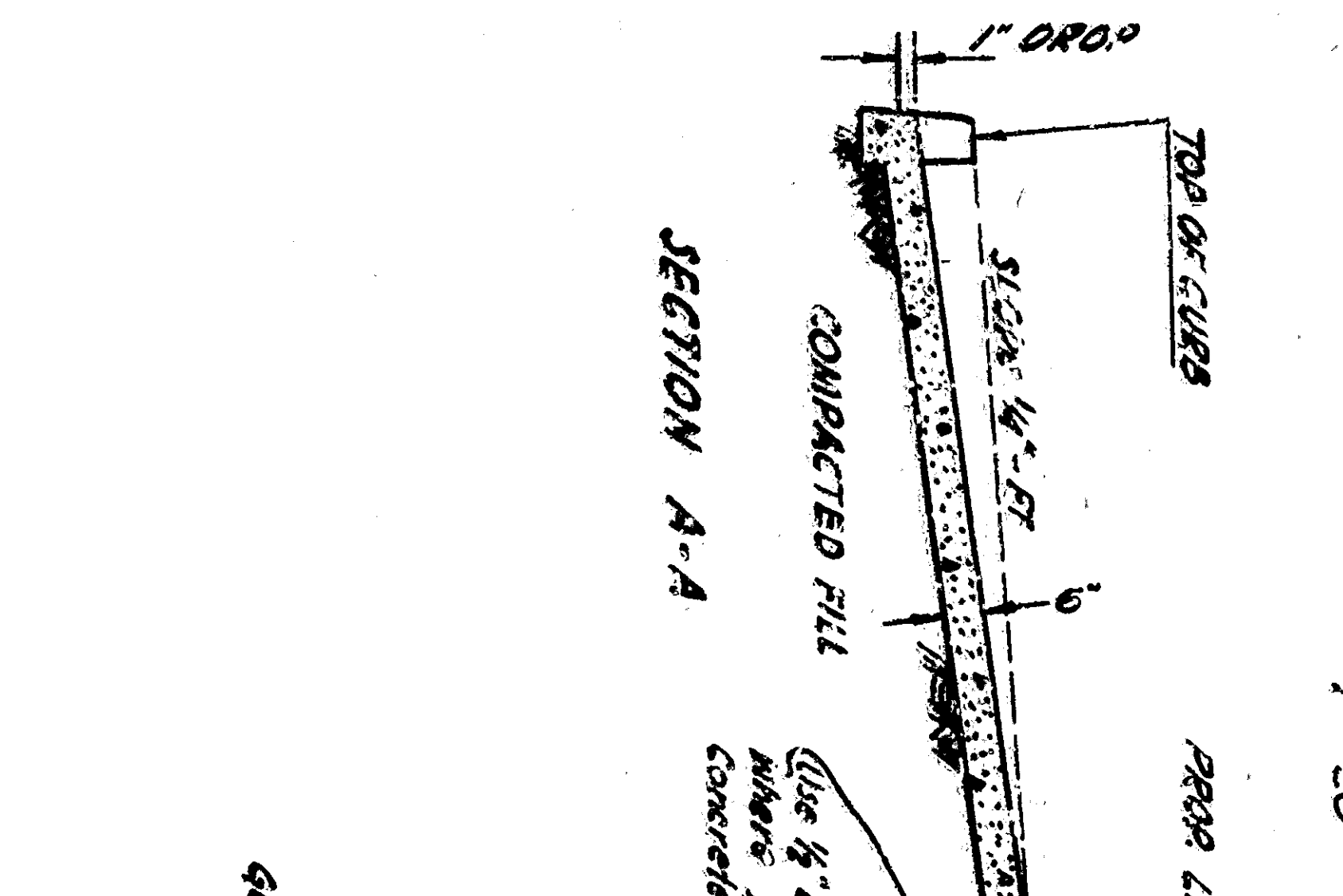
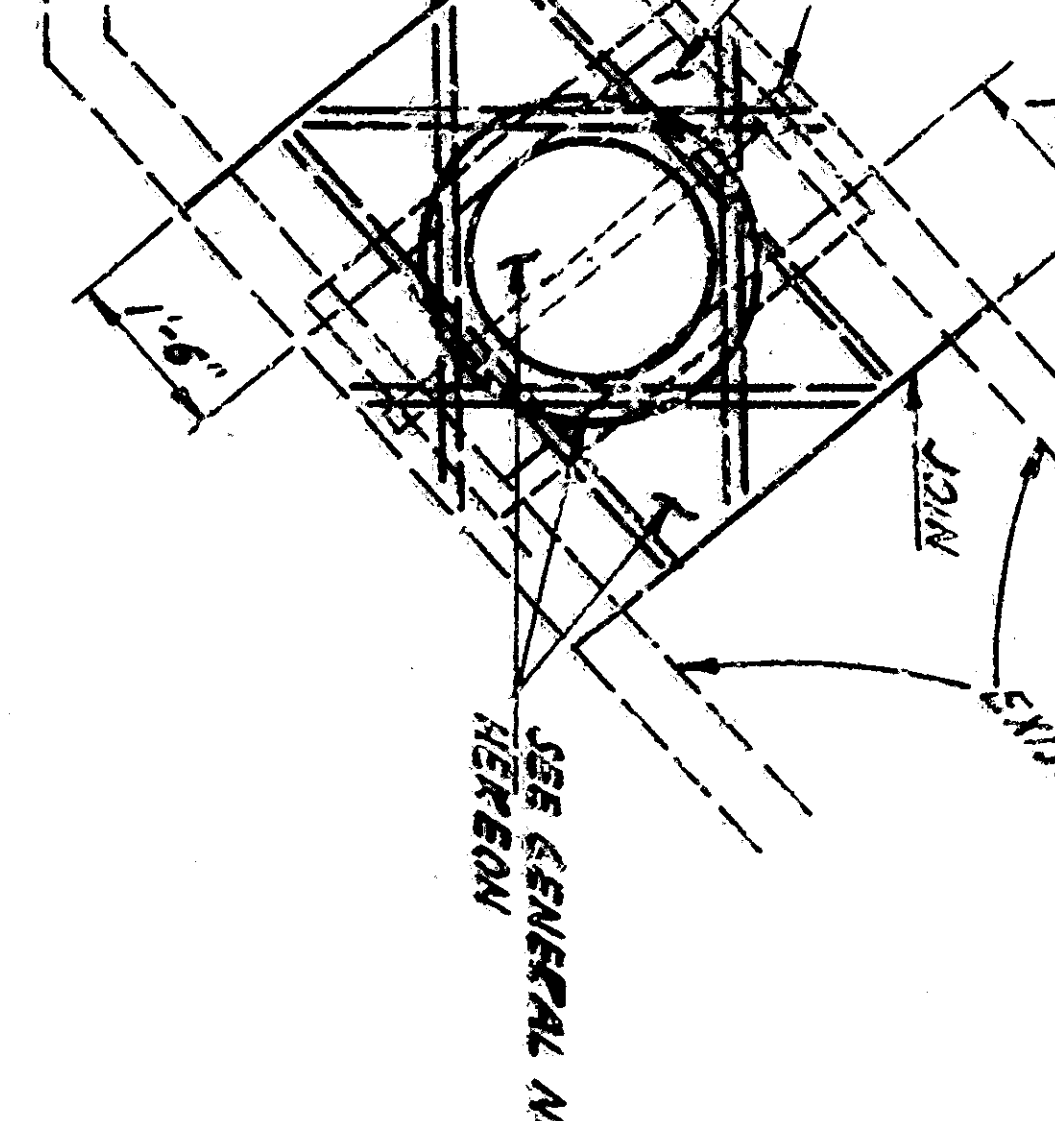
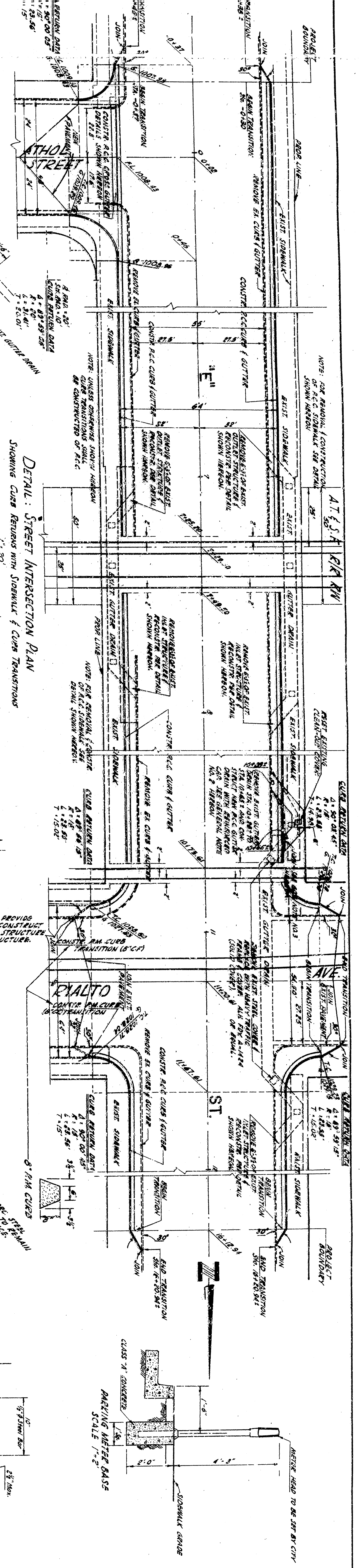
CHECKED BY: *R.C. Hall*

DATE: 11/1/54

DRIVING NO. 2833

SHEET 3

COMP. 27240



LOCATION	H	BEAR	H
BLIND THE INLET	3'-0"	10'-1"	1'-3"
BLIND THE GUTTER	3'-7"	10'-1"	1'-3"
INLET TO THE GUTTER	3'-7"	10'-1"	1'-3"
MANHOLE FOR THE INLET	8'-3"	10'-1"	1'-2"
MANHOLE FOR THE GUTTER	8'-3"	10'-1"	1'-2"
EXISTING GUTTER	3'-7"	10'-1"	1'-3"
EXISTING SIDEWALK	4'-0"	10'-1"	1'-2"

REDEVELOPMENT AGENCY OF THE CITY OF SAN BERNARDINO

MEADOWBROOK PROJECT AREA NO. 1 CALIF. AND

DEPARTMENT OF ENGINEERING CITY OF SAN BERNARDINO

"E" STREET MISCELLANEOUS DETAILS

ACCEPTED BY: *R.C. Hall*

STAFF ENGINEER

DRAWN BY: *R.C. Hall*

CHECKED BY: *R.C. Hall*

DATE: 11-1-58

2833

SHEET 3

COMP. 27240